

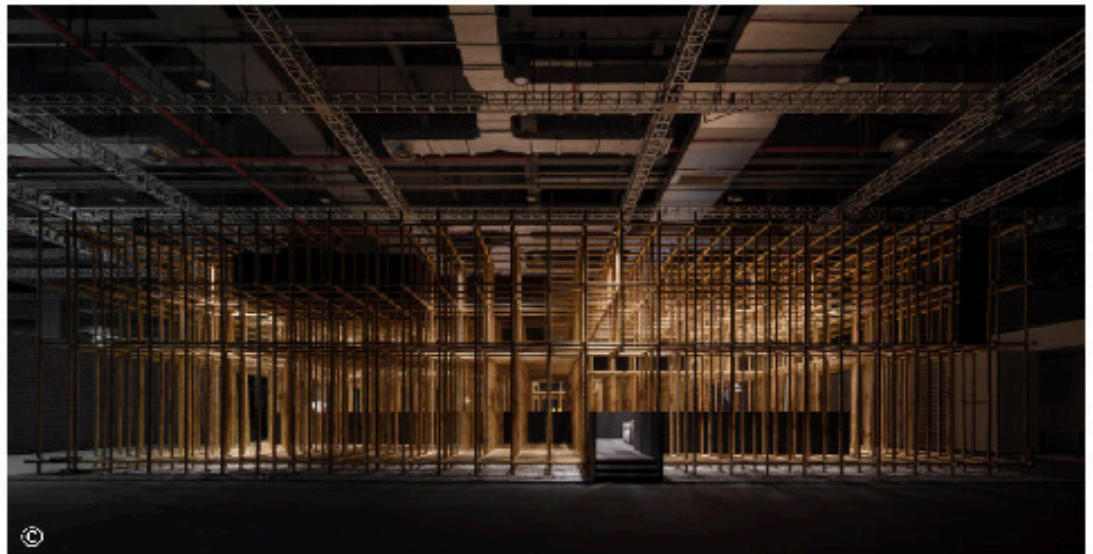
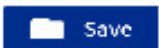
“THE STRUCTURAL FIELD/NERI&HU DESIGN AND RESEARCH OFFICE”

Archdaily; SEP 2022

<https://www.archdaily.com/988806/the-structural-field-neri-and-hu-design-and-research-office>



The Structural Field / Neri&Hu Design and Research Office



Curated by 韩双羽 - HAN Shuangyu

INSTALLATIONS & STRUCTURES · SHANGHAI, CHINA

 Architects: [Neri&Hu Design and Research Office](#)

 Area : 908 m²

 Year : 2022

 Photographs : [Runzhi Zhu](#), [CAMERICH](#)

 Structural Consultant : [Architectural Design and Research Institute of Tsinghua University Co., Ltd.](#)

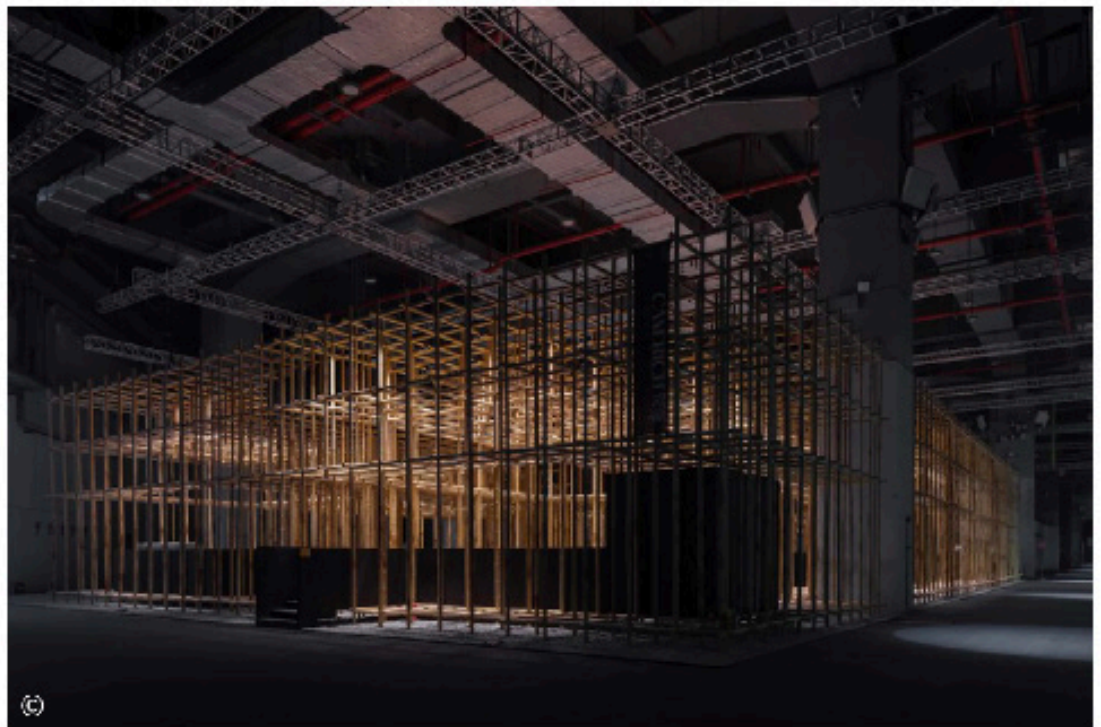
Lighting Consultant : [Atelier Zhang Xin](#)

[MORE SPECS](#)

“THE STRUCTURAL FIELD/NERI&HU DESIGN AND RESEARCH OFFICE”

Archdaily; SEP 2022

<https://www.archdaily.com/988806/the-structural-field-neri-and-hu-design-and-research-office>

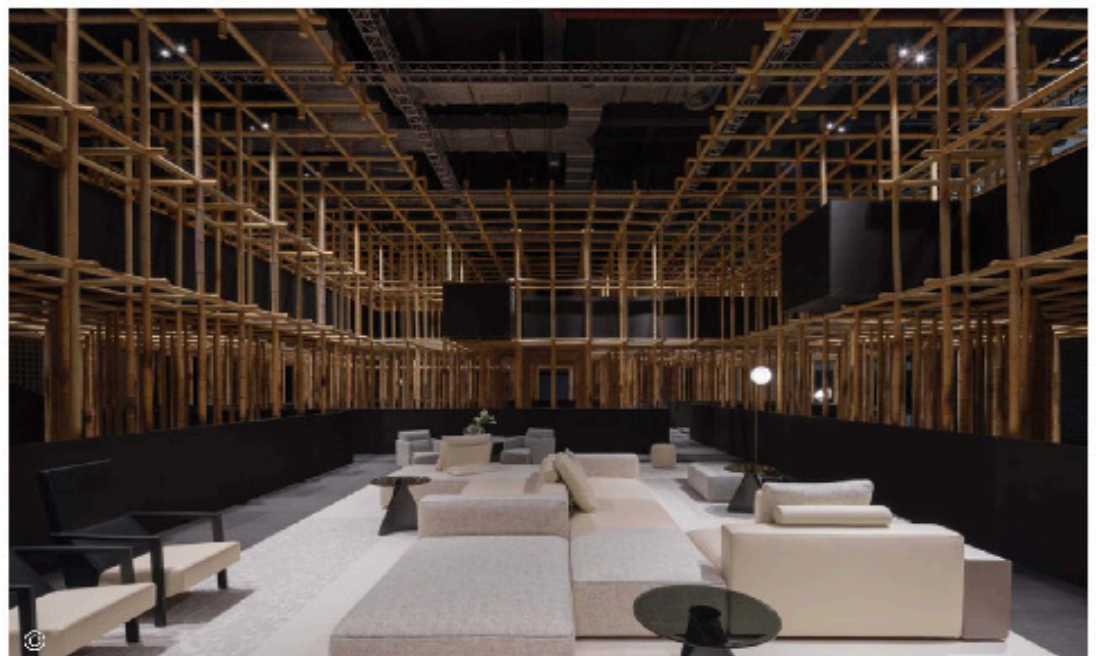


Text description provided by the architects. The concept for the Camerich pavilion stems from working through a number of dualities: nature/artifice, chaos/sanctuary, objects/the viewer, and tradition/innovation. Responding to the brand's invitation to rethink exhibition design within the context of international furniture fairs, Neri&Hu explores the possibilities of creating a *Structural Field*, as a way not necessarily to arrive at a harmonious synthesis, but perhaps to hold these seeming contradictions in suspension for the duration of this temporary installation.

“THE STRUCTURAL FIELD/NERI&HU DESIGN AND RESEARCH OFFICE”

Archdaily; SEP 2022

<https://www.archdaily.com/988806/the-structural-field-neri-and-hu-design-and-research-office>

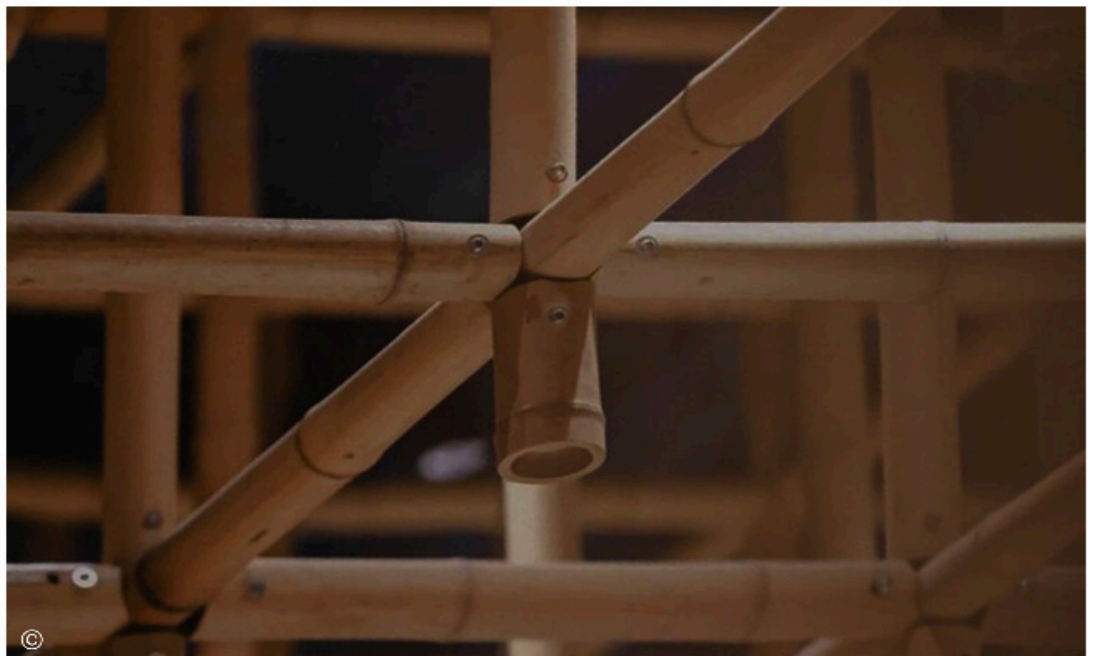


The choice of bamboo intersects these sets of dualities. As an abundant, fast growing, renewable natural material, bamboo in Asia and many parts of the world is also one of the oldest building materials. Although modern technology has expanded the construction application of bamboo, the lignified fibrous stalks, with its joints and organic profile, often retain marks of natural growth. In the pavilion design, Neri&Hu sets over 1,000 vertical bamboo members on a regular grid to allude to a sense of the exterior. Through a small entry, visitors are invited to begin a journey through a series of framed views, and intermittent layering of bamboo and spaces beyond.

“THE STRUCTURAL FIELD/NERI&HU DESIGN AND RESEARCH OFFICE”

Archdaily; SEP 2022

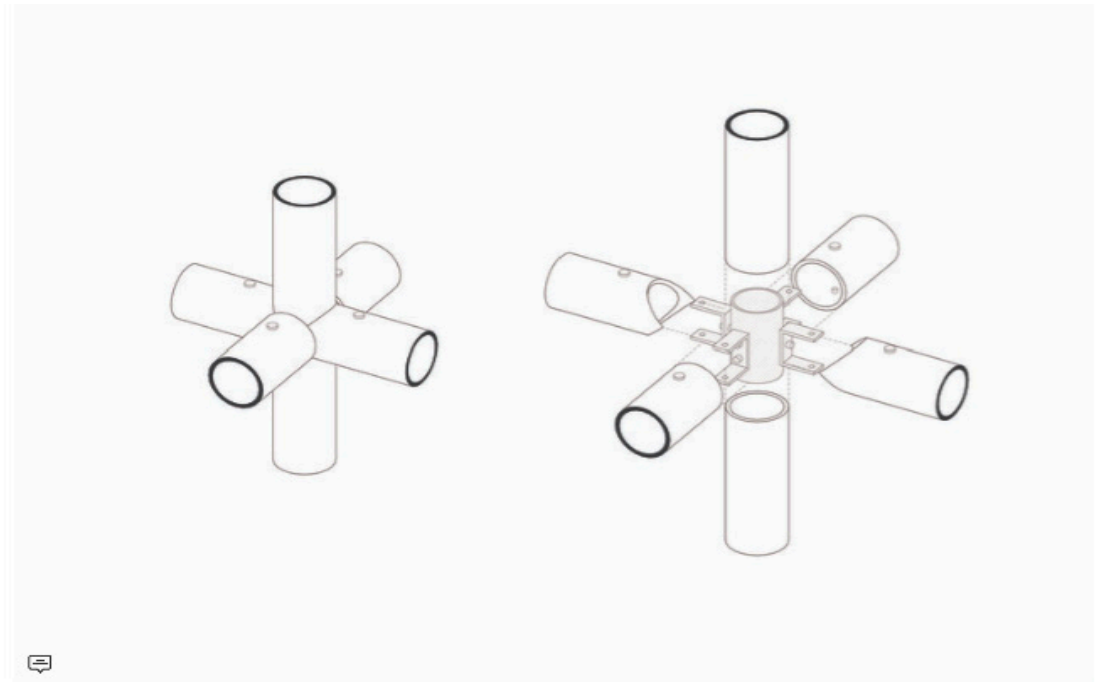
<https://www.archdaily.com/988806/the-structural-field-neri-and-hu-design-and-research-office>



“THE STRUCTURAL FIELD/NERI&HU DESIGN AND RESEARCH OFFICE”

Archdaily; SEP 2022

<https://www.archdaily.com/988806/the-structural-field-neri-and-hu-design-and-research-office>

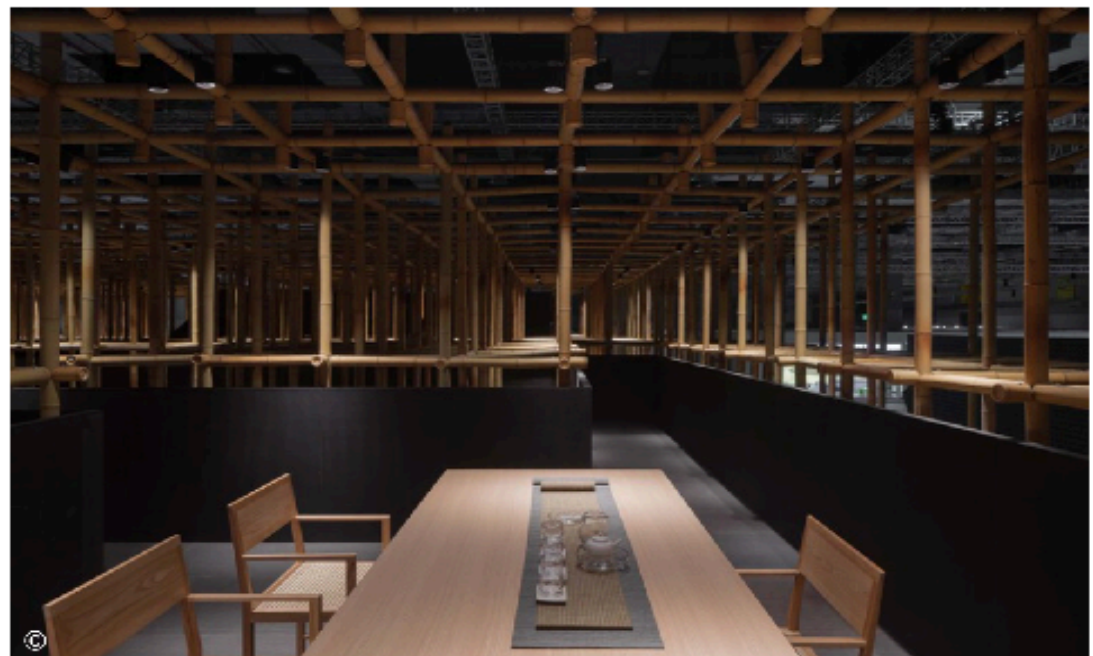
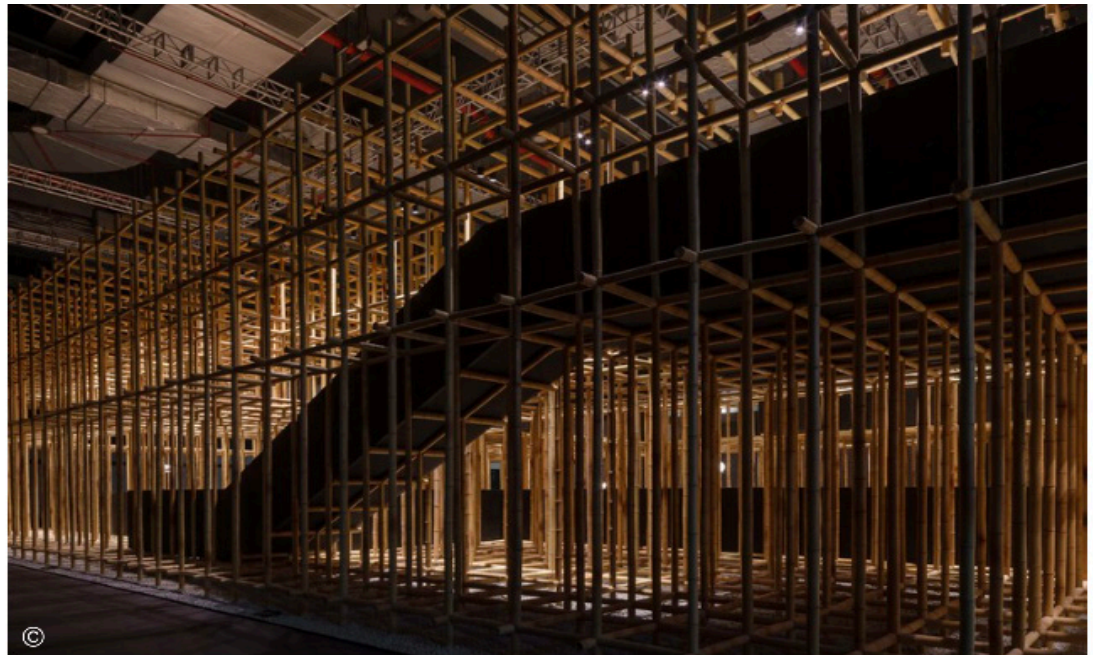


Within the varying density in the field, the relationship between objects and spectator is constantly shifting. As the exhibition did not provide pedestals or special display mechanisms for the furniture pieces, scenes of everyday life – small sitting areas, the living room, the bedroom, contemplation niches, etc. – are fully integrated within the path of the viewer. At times, the narrow and winding walkway gives the viewer a glimpse of the vignettes ahead, maintaining a distance between the spectator and the objects. In the public areas where the field opens up, the visiting spectator becomes embedded as part of the domestic scene, fully occupying the setting where the presence of furniture encourages user interaction. In other words, “at home” with the objects, the spectator takes on the role of a participant, on display as part of the exhibition. The transformation from the role of a “spectator” to a “character” on view and back, allows the visitor to be immersed not only in the phenomenon of the field, but also in one’s projected spaces, a stage for life.

“THE STRUCTURAL FIELD/NERI&HU DESIGN AND RESEARCH OFFICE”

Archdaily; SEP 2022

<https://www.archdaily.com/988806/the-structural-field-neri-and-hu-design-and-research-office>

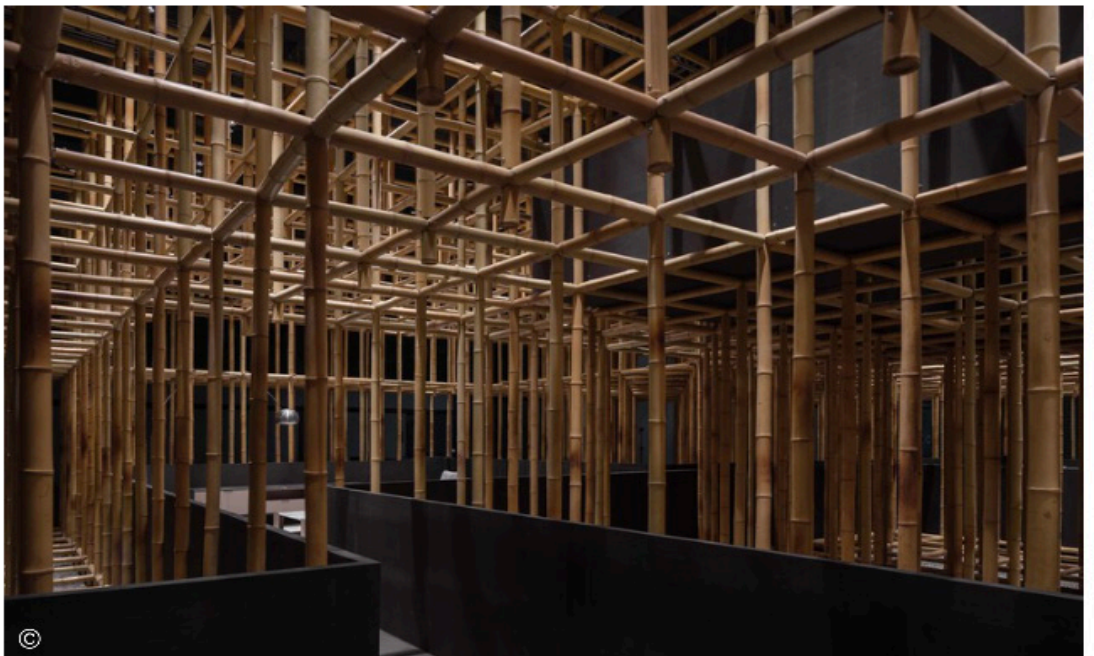


As a temporary structure, the *Structural Field* is also portable and scalable. In order to bring the pavilion to other international fair sites, special connection details and modular unit types were designed. In addition to meeting the requirements of assembling and disassembling in a matter of days, the particular setting of exhibiting world-class furniture and design also inspired us to push the envelope of building craftsmanship and technology. Embedded steel plates, single direction dovetailing of bamboo members, and the overall structural design for deflection and slender ratio are some of the ways we hope to exceed the conventional formal expectations of a temporary bamboo structure.

“THE STRUCTURAL FIELD/NERI&HU DESIGN AND RESEARCH OFFICE”

Archdaily; SEP 2022

<https://www.archdaily.com/988806/the-structural-field-neri-and-hu-design-and-research-office>



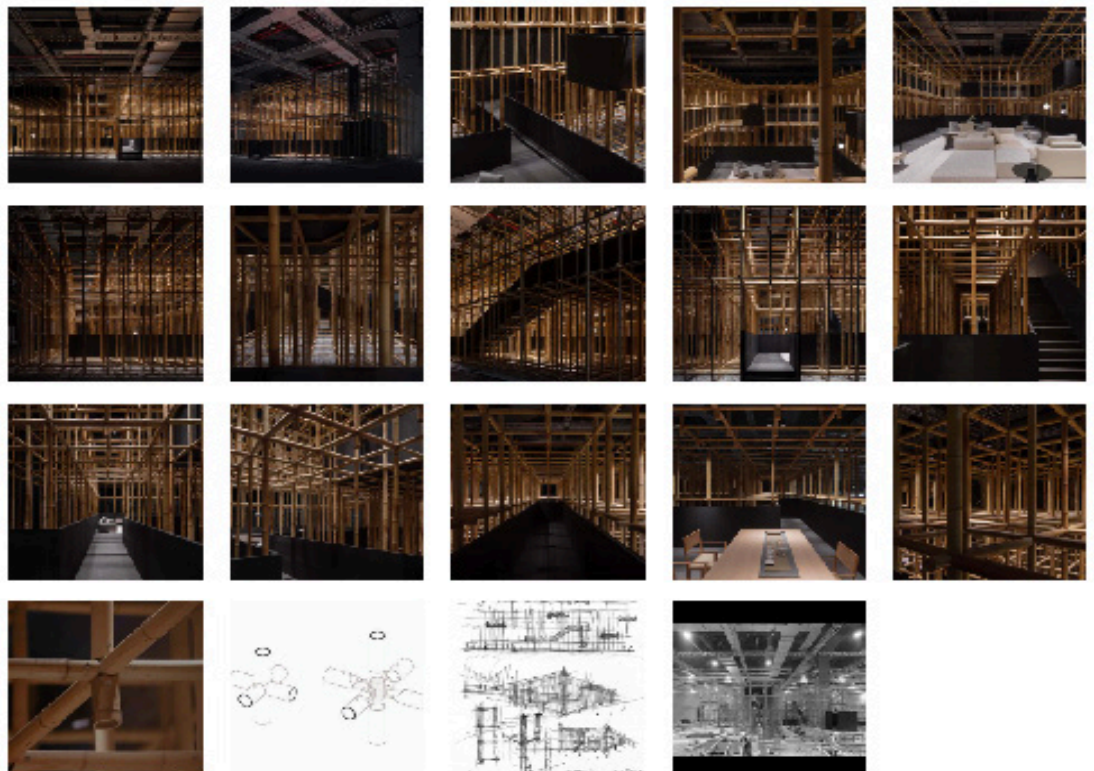
“THE STRUCTURAL FIELD/NERI&HU DESIGN AND RESEARCH OFFICE”

Archdaily; SEP 2022

<https://www.archdaily.com/988806/the-structural-field-neri-and-hu-design-and-research-office>



Project gallery



"THE STRUCTURAL FIELD/NERI&HU DESIGN AND RESEARCH OFFICE"

Archdaily; SEP 2022

<https://www.archdaily.com/988806/the-structural-field-neri-and-hu-design-and-research-office>



Project location

Address: Shanghai, China



Location to be used only as a reference. It could indicate city/country but not exact address.